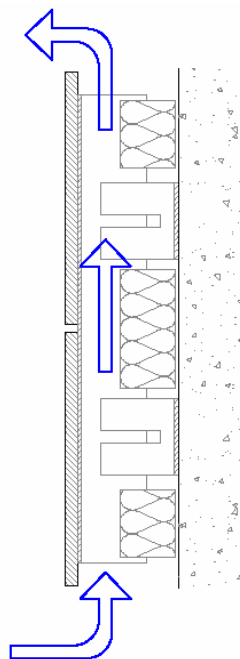


Ventilated façade: Basic principles.

Parklex Facade panels are decorative cladding that must be installed as a ventilated façade. The ventilated façade is an optimal system, thanks to the rational separation between the thermal insulation, the load-bearing structure and the Parklex Facade panels.

The ventilated façade consists of creating a “moving air chamber” between the panels and their next cladding element, such as a layer of insulation or the cladding itself.

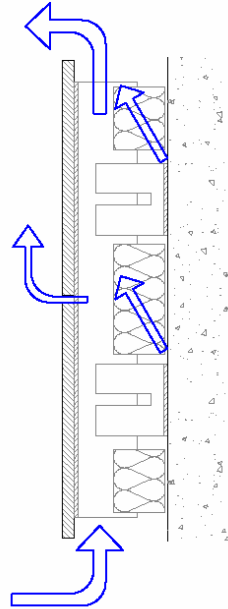


In order to allow the air to circulate, it is necessary for there to be openings at the base and at the crown of the cladding. If the façade is not continuous and it is divided into different sections, there must also be openings at the bottom and the top, as well as in the spaces for doors and windows.

Advantages of a ventilated façade:

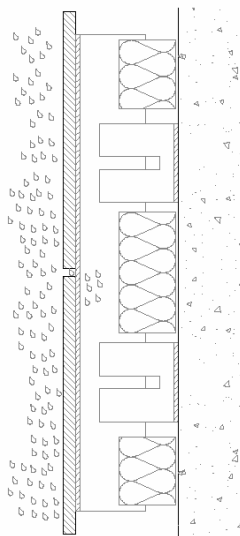
1. Permeability:

Moving air diffuses water vapour from the inside to the outside, and facilitates the transpiration of the façade, preventing condensation from forming behind the panels.



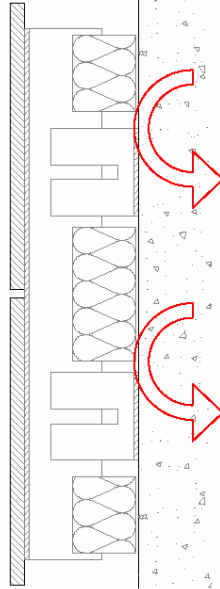
2. Water protection

Moving air provides greater protection from the elements, because it prevents rain water from infiltrating inside the building structure.



3. Thermal insulation - Elimination of heat bridges

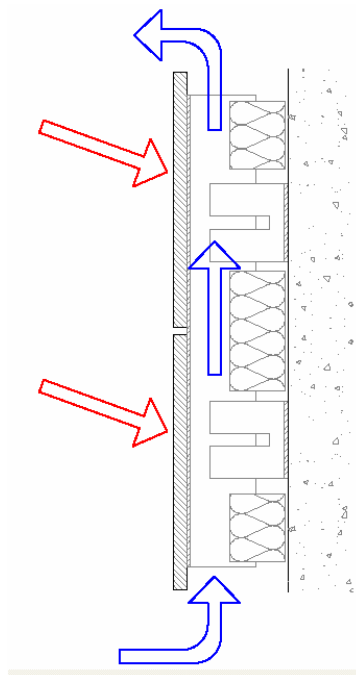
The load-bearing structure is insulated from the exterior structure, eliminating heat bridges. In this manner, temperature fluctuations are reduced in the interior cladding, which leads to energy savings.



4. Solar protection

The thermal comfort is improved inside the building, preventing overheating in summer, as it facilitates the transpiration of the façade and reduces the amount of thermal energy that reaches the inside of the building.

The internal structure is protected from direct radiation and from the elements.



5. Acoustic protection

As a compound system with several layers, greater noise absorption is created.

